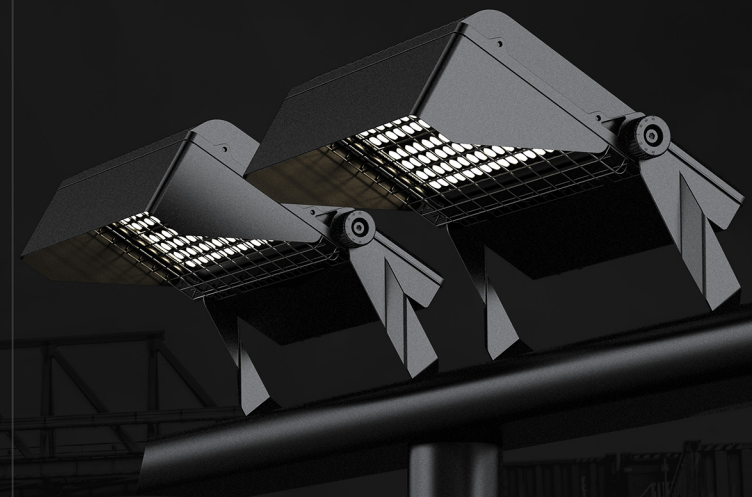




MAKE THE RIGHT LIGHT



GTL LIGHTING(SHEN ZHEN)CO.,LTD.

📍 Contact
Building 1, no. 28 cuijing road,
Longtian street, pingshan new district, Shenzhen, China

🌐 info@gtllighting.com
www.gtllighting.com

☎ +86 755 2310 4379
+86 755 2314 8360



I FOCUS

LED HIGH MAST LIGHT

WHAT'S I FOCUS?

We provide a system that outperforms anything you have experienced in the past. Everything you want and need to see are highlighted but you will not see the lighting fixtures. Lighting smartly and efficiently with reliable and high performance becomes good solution.



ANTI-CORROSION

Resistant to acid gases in corrosive areas

Resistant to salt spray corrosion in the marine climate environment

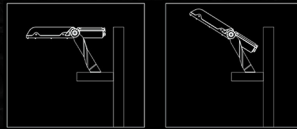
Anti-UV with 1 year outdoor Florida 45degrees south facing exposure test



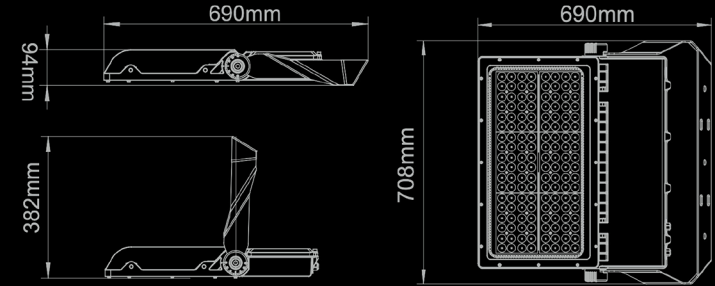
ANTI-VIBRATION

Withstand 3G acceleration vibration frequency of 100,000 times

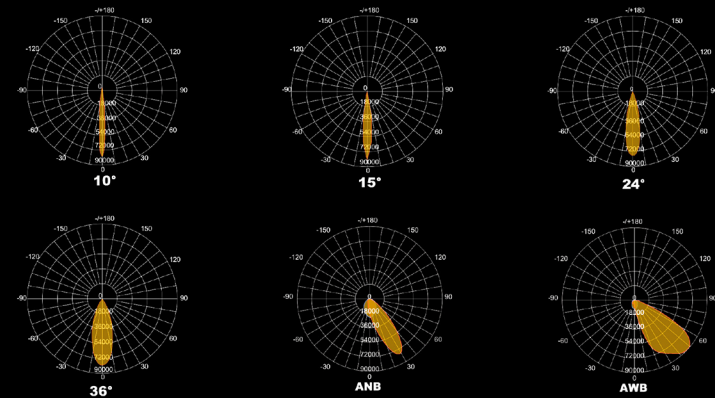
SUS316 stainless steel mounting bracket efficiently releases the pressure of vibration



PRODUCT SIZE.



PRODUCT SPECIFICATION.



SPORTS GAMES

Optional precised beam angle to fit different sized sports area, which reduces the fixture quantities, installation fees and energy consumption. With higher lighting level and double special anti-glare treatment, it is more preferable than ordinary LED or HID products of the same type.



MINING SITE

Over temperature protection design rated for exceptional durability and long term reliability.



SEAPORT DOCK

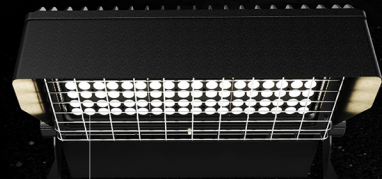
3G vibration design ensure the light under high frequency of wind, traffic, vehicles ect. Built in surge protection largely improve the stability of driver's performance.

ANTI-GLARE

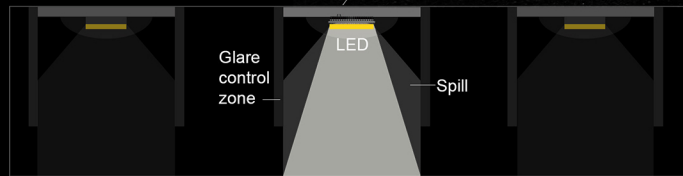
Each light source cavity added with a anti-glare shield

Each lamp added with a anti-glare cover

Metal mesh protection or high color rendering index is optional



The anti-glare shield cut off spill directly, which reduced glare largely compare to typical led lighting solutions, without compromising main light output.



NEMA Beam

| Product Code | AREA350W | AREA500W | AREA600W |
|------------------------|--|-------------------|--------------------|
| Power | 350W | 500W | 600W |
| Input Voltage | 90-305VAC/200-480VAC | | |
| Input Current | 1.59A@220VAC | 2.27A@220VAC | 2.73A@220VAC |
| PF | >0.90@220VAC | | |
| Dimming (Optional) | 3 in 1 dimming (PWM, 0-10V, Resistor) - Dali | | |
| CCT | 2700K-6500K | | |
| R80 | Luminous Flux 35000-52500Lm±10% | 50000-75000Lm±10% | 60000-90000 Lm±10% |
| R70 | Efficiency | 100-150Lm/W±10% | |
| LED Brand | Nichia , Cree | | |
| Light type | 10° , 15° , 24° , 36° , ANB , AWB | | |
| Operation Temp. | -40 C ~ +65 C | | |
| Storage Temp. | -40 C ~ +85 C | | |
| Life Span | 45 C L70>100000Hours(LED) | | |
| IP Class | IP66 | | |
| IK Class | IK08 | | |
| Certificate | ETL,CE, CB, C-TICK,ROHS | | |
| Lamp Body Color | Black (RAL9005) | | |
| Product Size (mm) | 690*708*94 | | |
| Net weight (kg) ±0.3 | 22.1 | 23 | 23.5 |
| Packing Size (mm) | 800*800*150 | | |
| Gross weight (kg) ±0.3 | 24.7 | 25.6 | 26.1 |
| Installation mode | Bracket Mount | | |